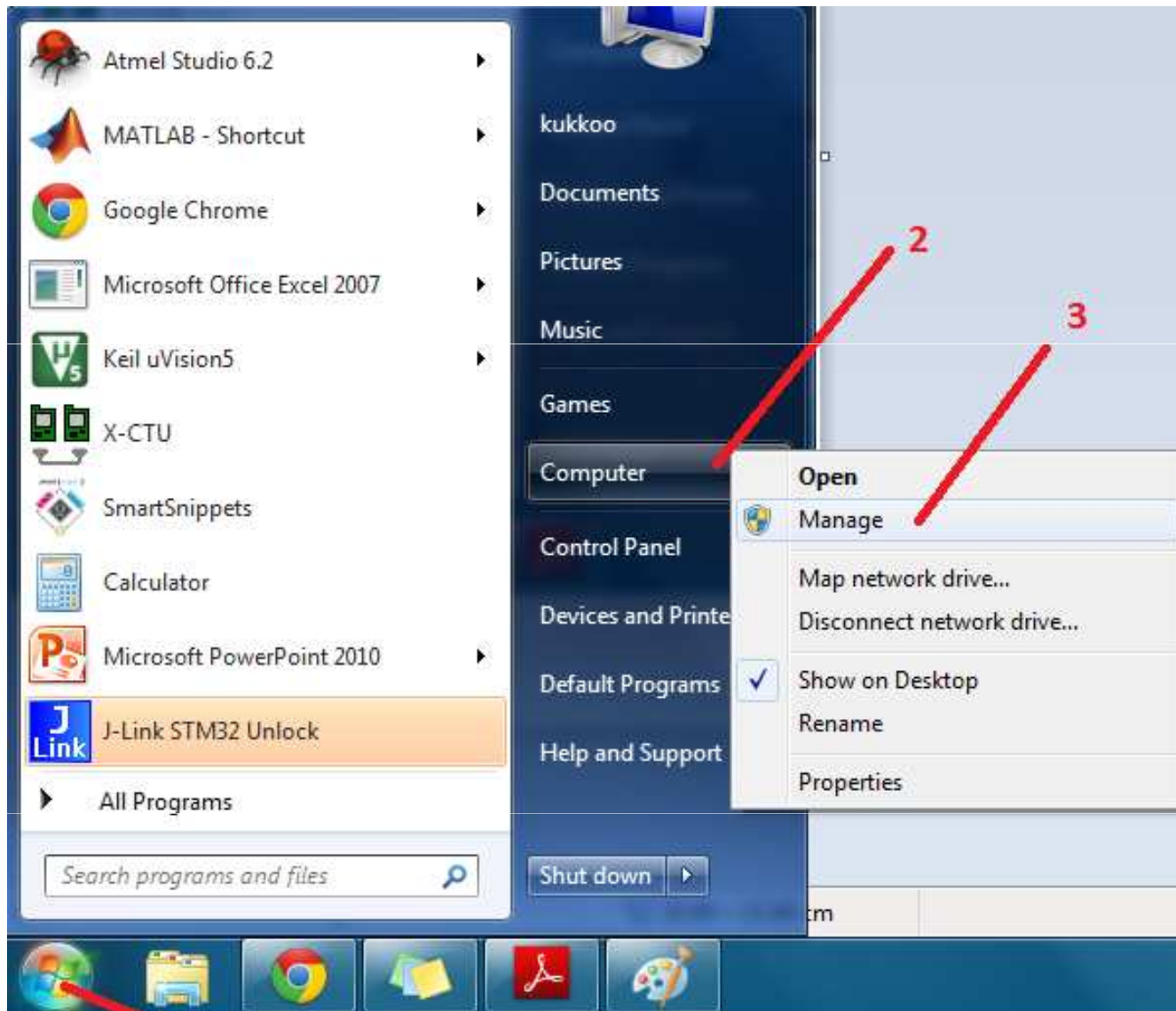
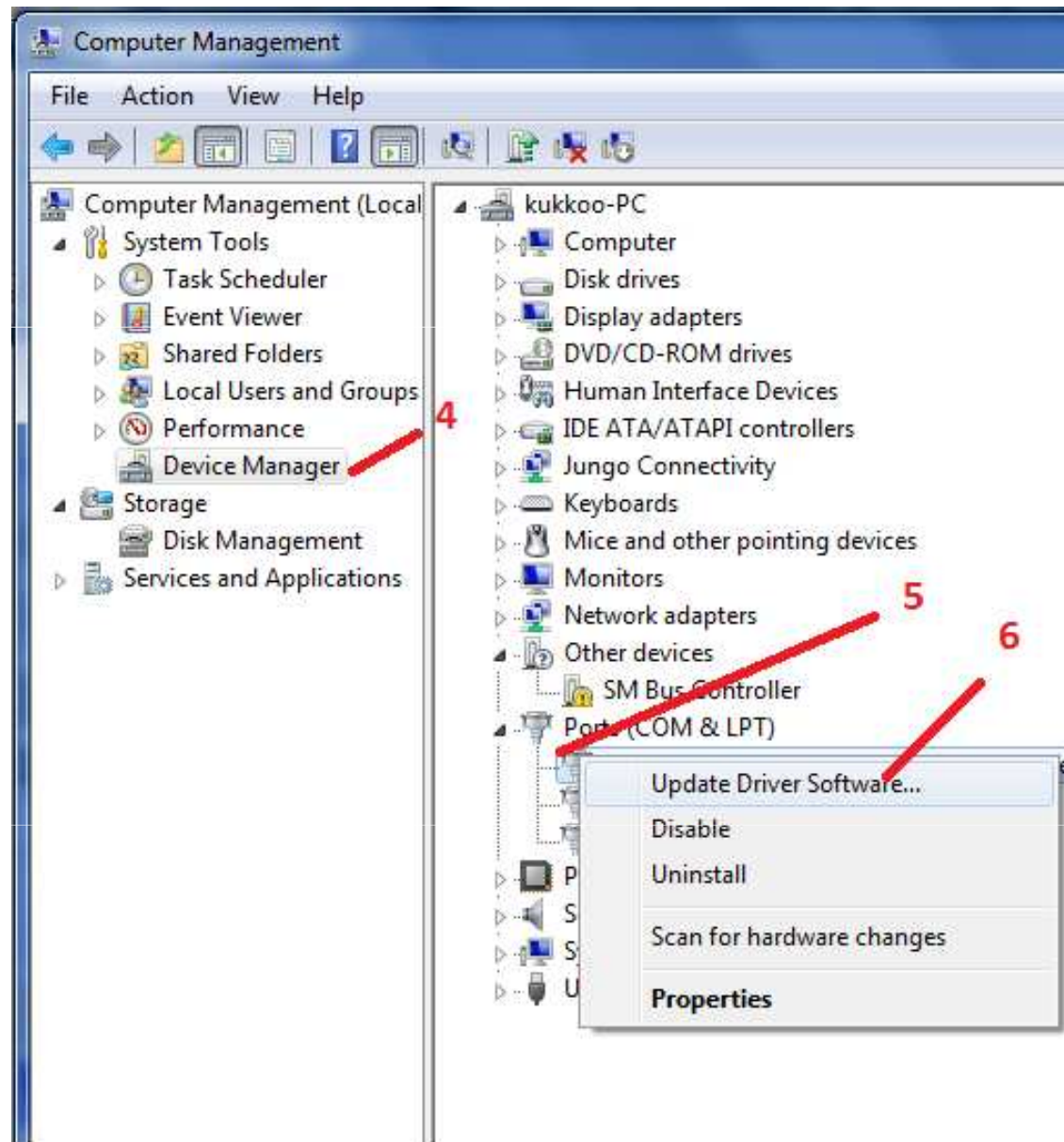
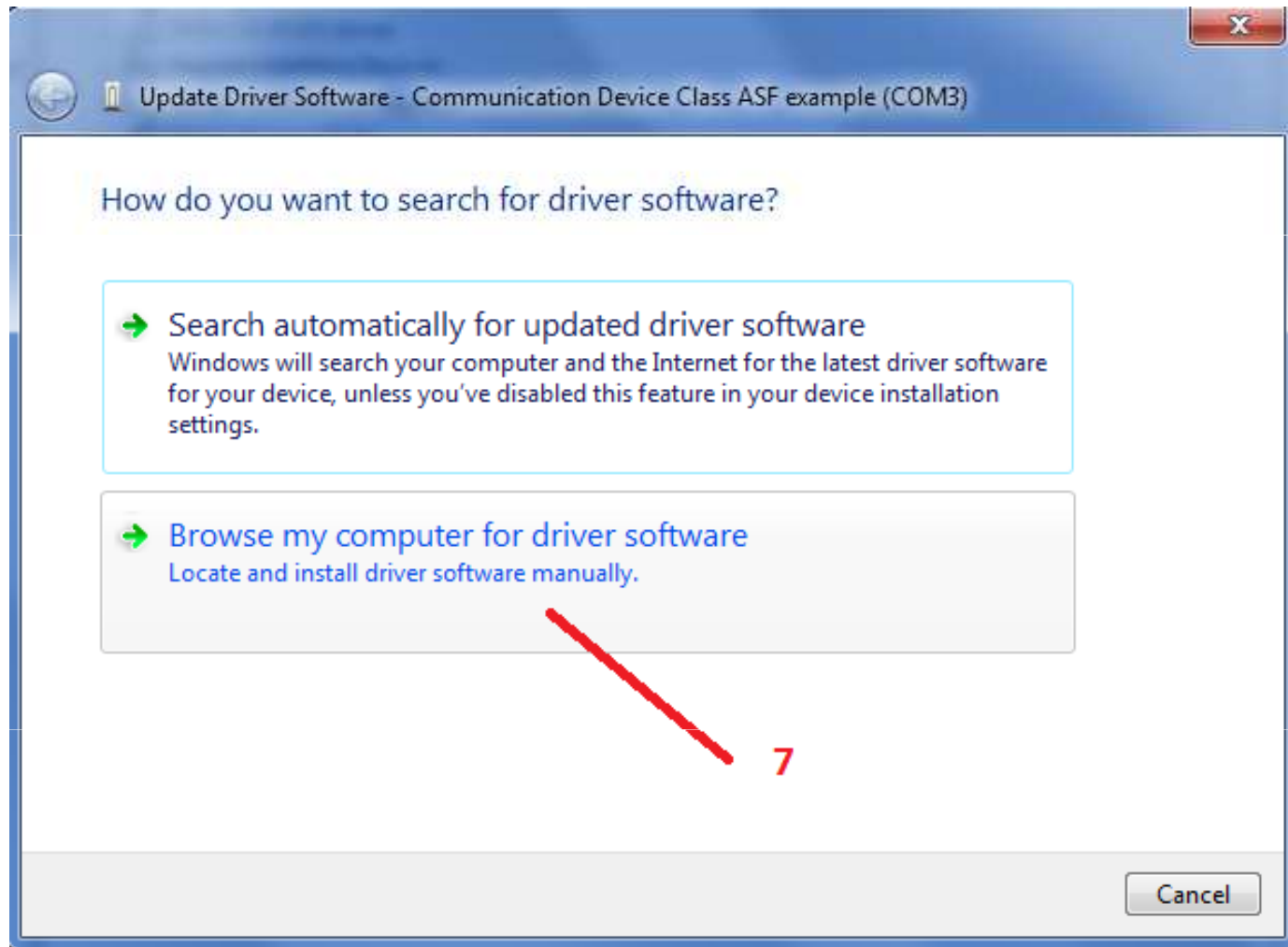


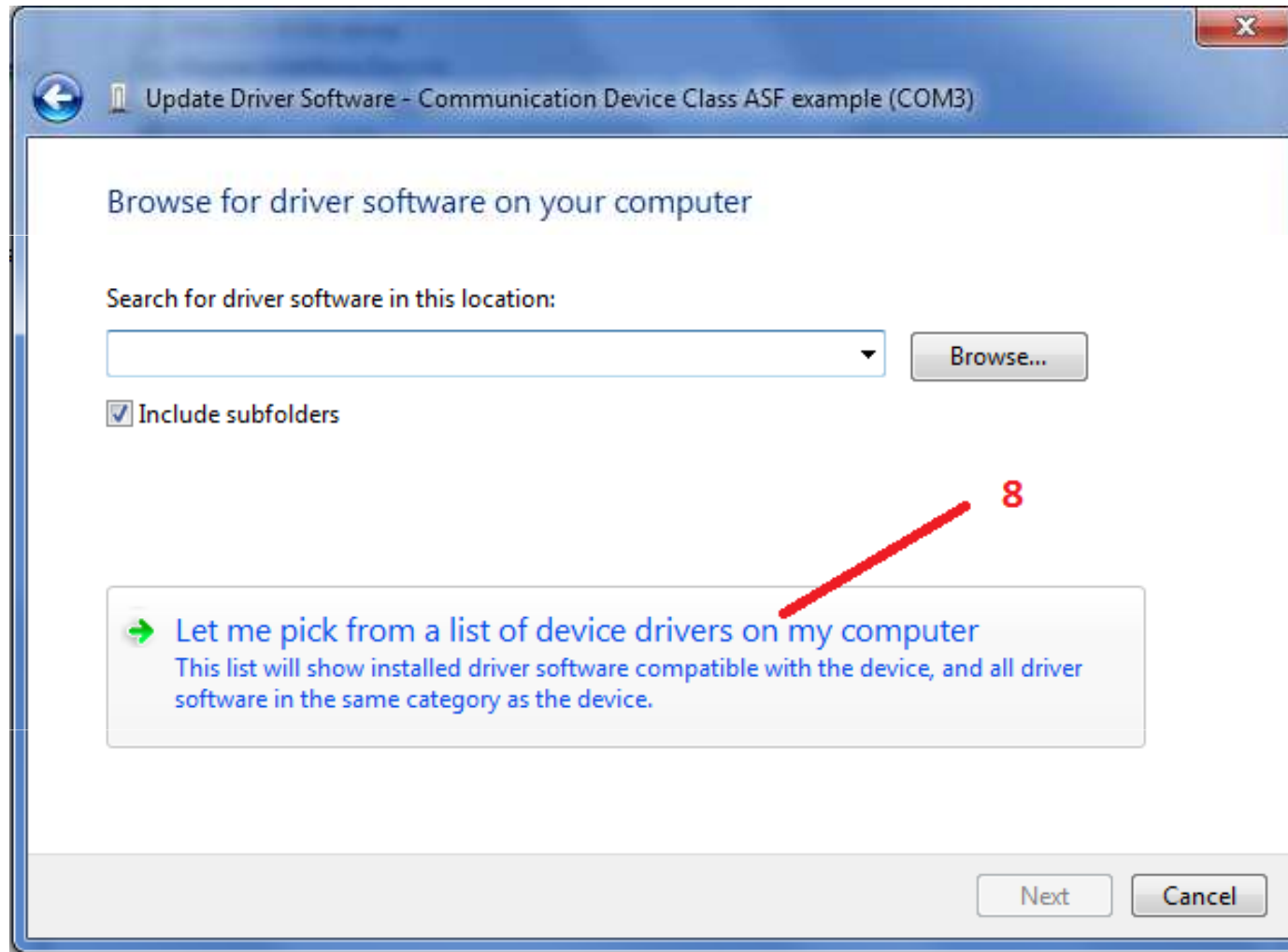
# How To Install The USB Driver For Osmium MIMU Platforms On Windows OS

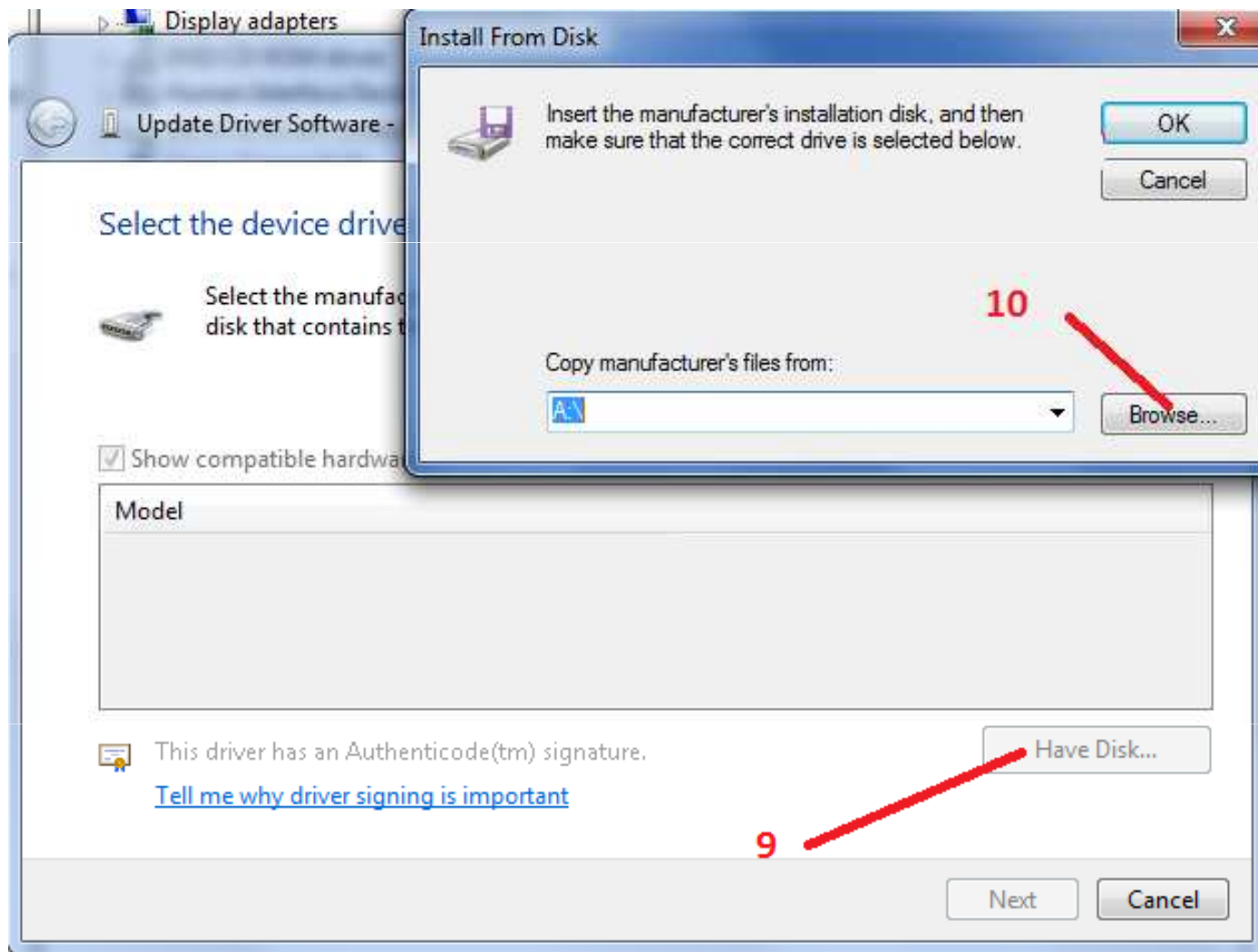


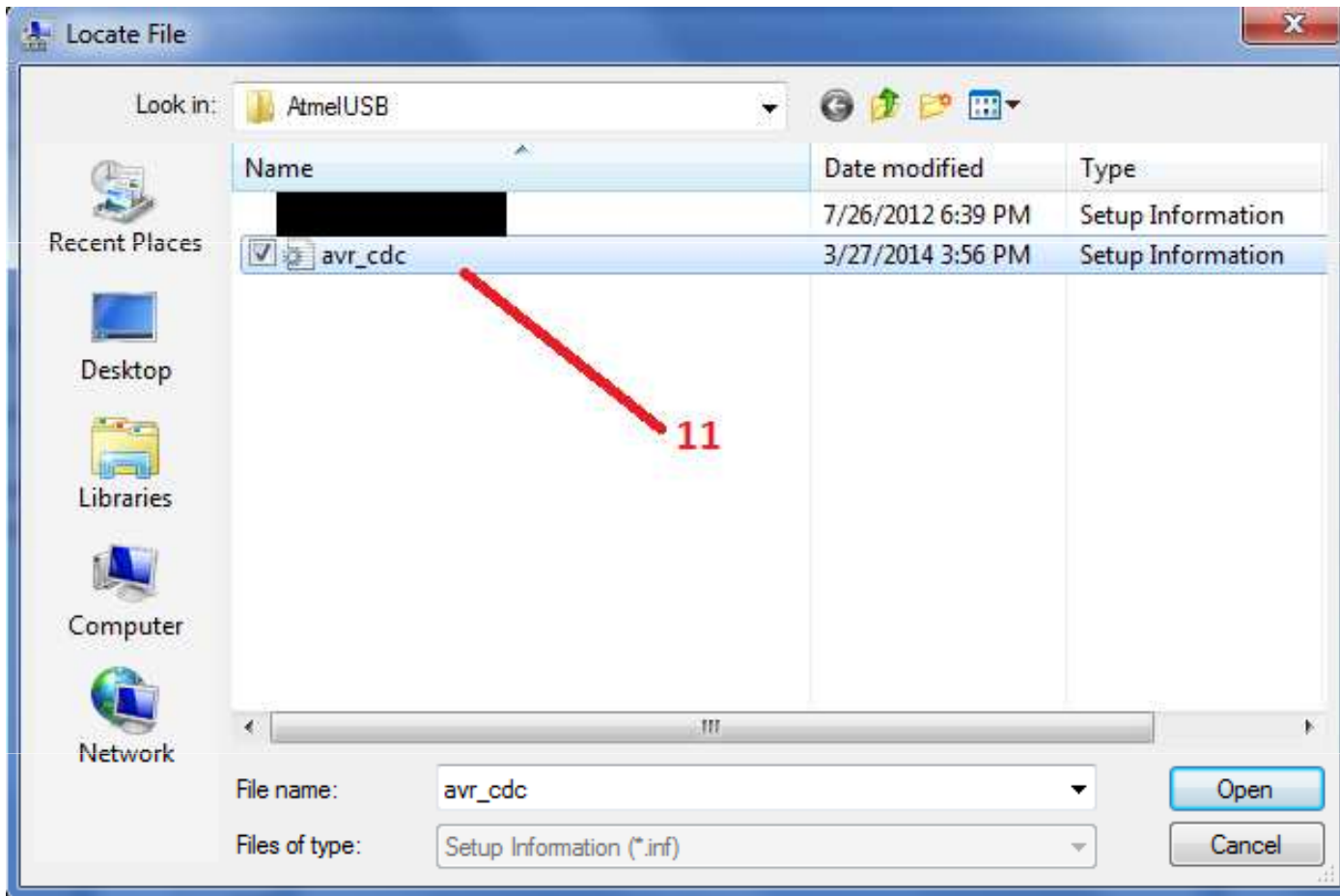
1

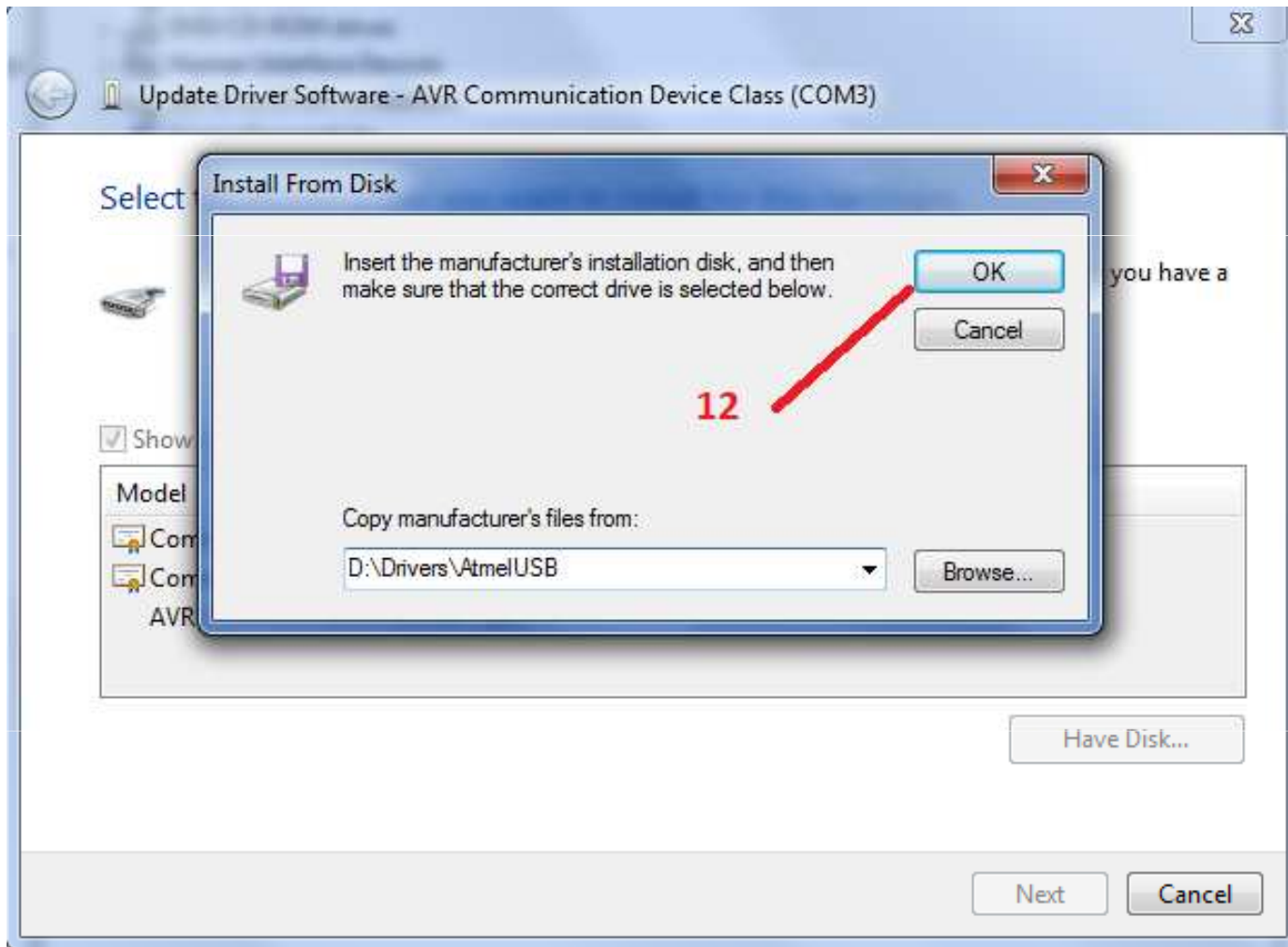




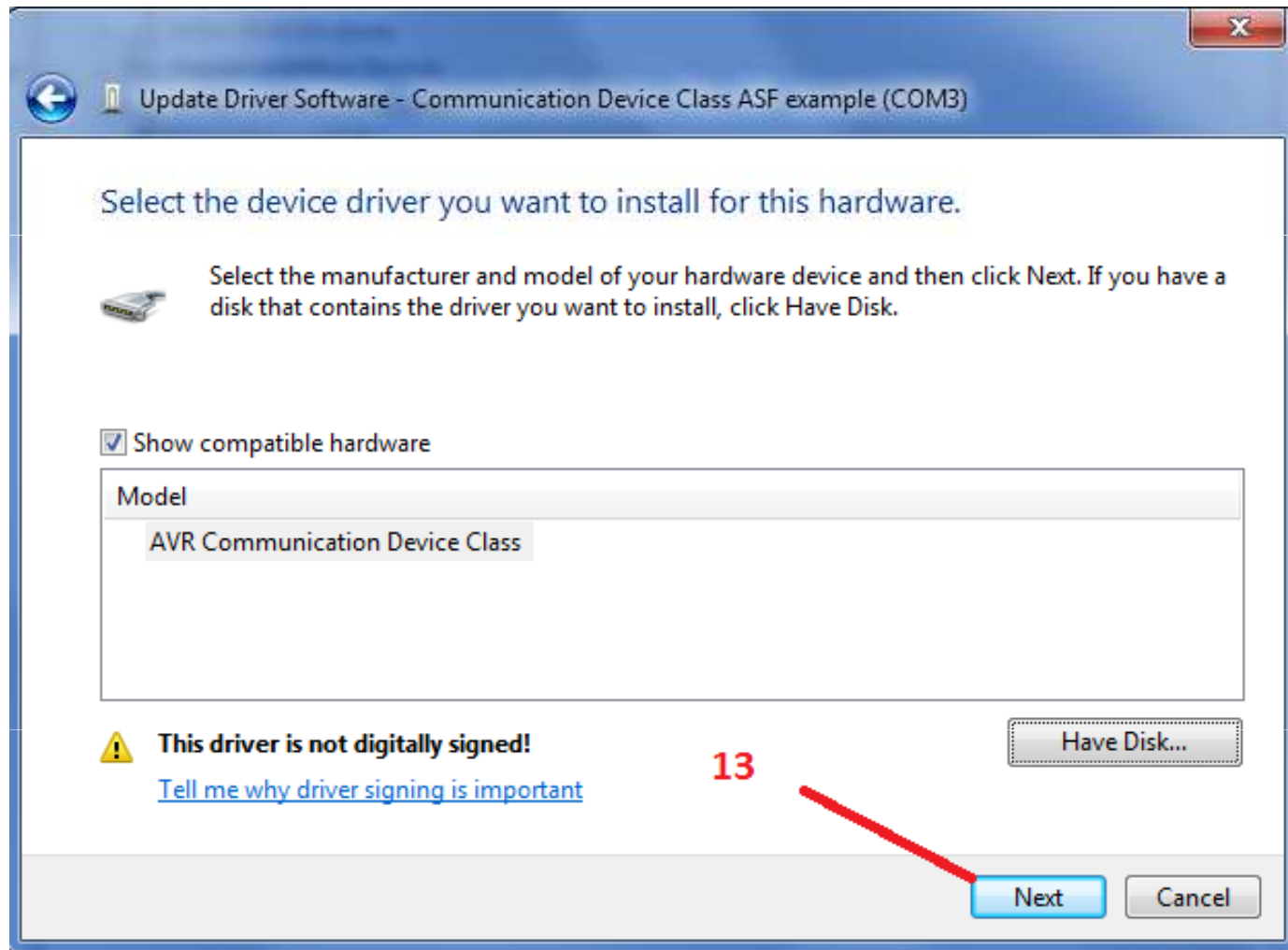












Select the device driver you want to install for this hardware.



Select the manufacturer and model of your hardware device and then click Next. If you have a disk that contains the driver you want to install, click Have Disk.

Show compatible hardware

- Model
  - AVR Communication Device Class

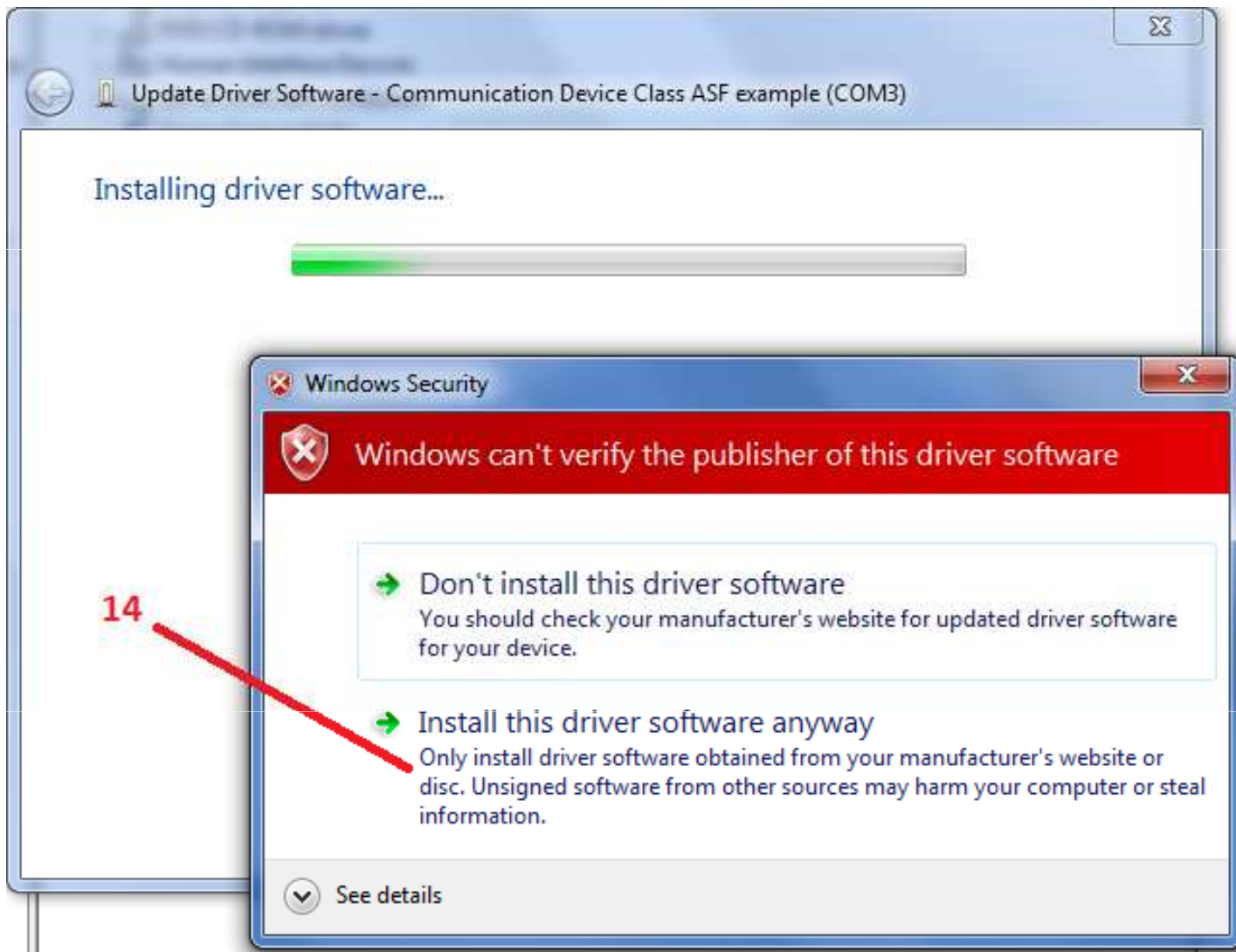
 **This driver is not digitally signed!**  
[Tell me why driver signing is important](#)

Have Disk...

13

Next

Cancel



14

**Windows Security**

**Windows can't verify the publisher of this driver software**

- **Don't install this driver software**  
You should check your manufacturer's website for updated driver software for your device.
- **Install this driver software anyway**  
Only install driver software obtained from your manufacturer's website or disc. Unsigned software from other sources may harm your computer or steal information.

See details

